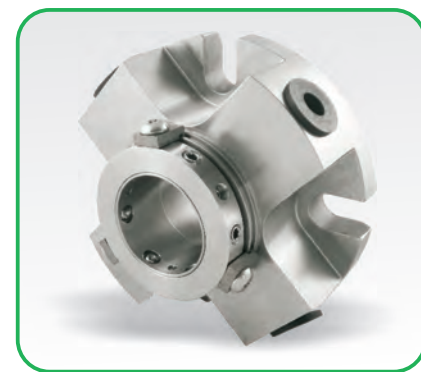


Sellos Mecánicos  
Garnitures Mécaniques  
Mechanical Seals  
Gleitringdichtungen

# 390 SQ



Cartucho simple, conexiones de lavado y quench, equilibrado, muelles múltiples y sentido de rotación independiente.

Cartouche simple, connexion de lavage et quench, équilibrée, ressorts multiples et sens de rotation indépendant.

Cartridge simple seal, cover with auxiliary connections for flushing and quench, balanced, multi-spring and independent on direction of rotation.

Einfache Cartridgedichtung, Spül- und Quenschanschlüsse, entlastet, mehrere Federn und drehrichtungsunabhängig.

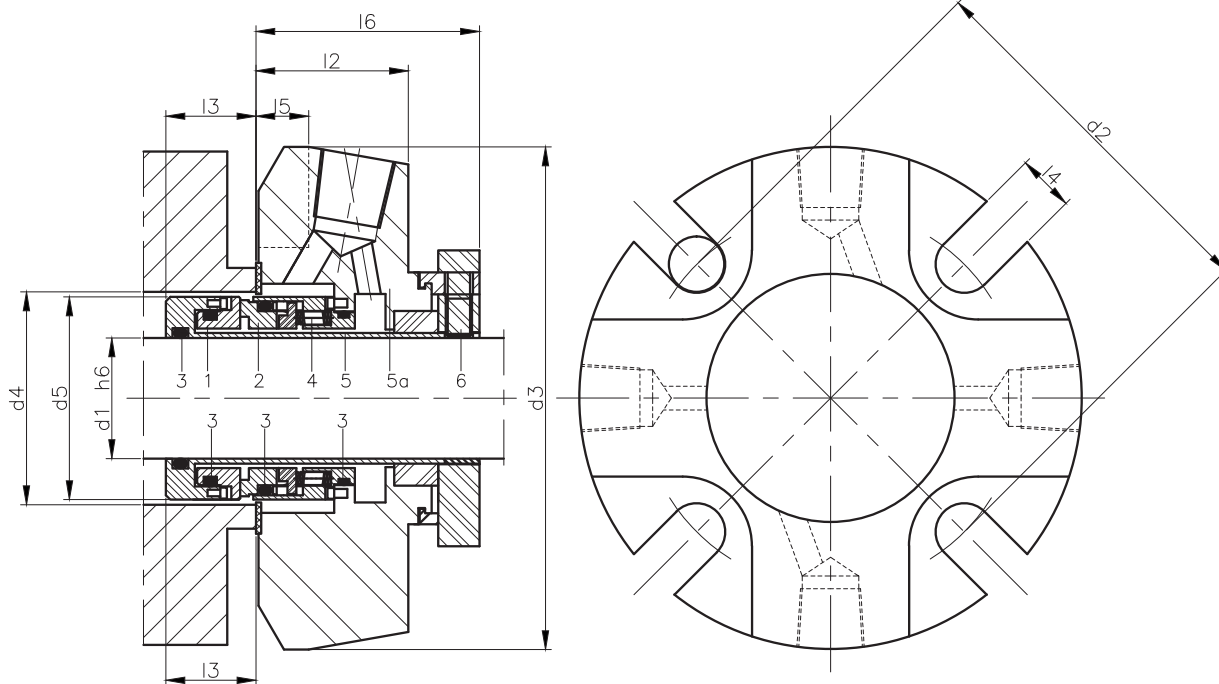
TABLA DIMENSIONAL (Dimensiones en mm. sujetas a variaciones o modificaciones)

TABLEAU DIMENSIONNEL (Dimensions en mm. sujettes à variations ou modifications)

| Ref. | d <sub>1</sub> | d <sub>2</sub> | d <sub>3</sub> | d <sub>4</sub><br>Min. | d <sub>4</sub><br>Max. | d <sub>5</sub> | l <sub>2</sub> | l <sub>3</sub> | l <sub>4</sub> | l <sub>5</sub> | l <sub>6</sub> |
|------|----------------|----------------|----------------|------------------------|------------------------|----------------|----------------|----------------|----------------|----------------|----------------|
| 25   | 25             | 71.2           | 101.6          | 41.3                   | 48.0                   | 39.7           | 34.4           | 15.8           | 13.3           | 13.5           | 49.6           |
| 28   | 28             | 74.5           | 104.8          | 44.5                   | 51.2                   | 42.9           | 36.7           | 15.0           | 13.3           | 13.5           | 52.4           |
| 30   | 30             | 79.9           | 108.0          | 46.1                   | 56.5                   | 44.5           | 36.7           | 12.7           | 13.3           | 13.5           | 52.4           |
| 32   | 32             | 81.6           | 108.0          | 47.6                   | 58.3                   | 46.0           | 36.7           | 16.9           | 13.3           | 13.5           | 52.4           |
| 33   | 33             | 84.8           | 111.1          | 50.8                   | 61.5                   | 49.3           | 36.7           | 16.9           | 13.3           | 13.5           | 52.4           |
| 35   | 35             | 84.8           | 111.1          | 50.8                   | 61.5                   | 49.3           | 36.7           | 16.9           | 13.3           | 13.5           | 52.4           |
| 38   | 38             | 91.4           | 123.8          | 57.2                   | 68.1                   | 55.5           | 37.8           | 15.7           | 13.3           | 15.1           | 54.0           |
| 40   | 40             | 95.7           | 127.0          | 60.3                   | 71.4                   | 58.7           | 37.8           | 15.7           | 14.3           | 15.1           | 54.0           |
| 43   | 43             | 98.4           | 133.4          | 63.0                   | 74.1                   | 61.1           | 37.8           | 15.7           | 14.3           | 15.1           | 54.0           |
| 45   | 45             | 98.4           | 133.4          | 63.0                   | 74.1                   | 61.1           | 37.8           | 15.7           | 14.3           | 15.1           | 54.0           |
| 48   | 48             | 98.4           | 133.4          | 66.7                   | 74.1                   | 64.7           | 37.8           | 15.7           | 14.3           | 15.1           | 54.0           |
| 50   | 50             | 101.6          | 139.7          | 70.0                   | 76.6                   | 67.9           | 40.7           | 16.5           | 14.3           | 15.1           | 58.7           |
| 53   | 53             | 113.5          | 148.8          | 73.0                   | 85.3                   | 71.1           | 40.7           | 16.5           | 17.4           | 15.1           | 58.7           |
| 55   | 55             | 113.5          | 148.8          | 75.0                   | 85.3                   | 72.9           | 40.7           | 16.5           | 17.4           | 15.1           | 58.7           |
| 58   | 58             | 116.0          | 165.1          | 76.2                   | 88.5                   | 74.2           | 40.7           | 16.5           | 17.4           | 15.1           | 58.7           |
| 60   | 60             | 119.9          | 165.1          | 79.4                   | 91.7                   | 77.4           | 43.6           | 15.2           | 17.4           | 15.9           | 62.6           |
| 63   | 63             | 127.0          | 171.5          | 85.7                   | 98.8                   | 83.8           | 43.6           | 10.6           | 17.4           | 15.9           | 65.1           |
| 65   | 65             | 127.0          | 171.5          | 85.7                   | 98.8                   | 83.8           | 43.6           | 10.6           | 17.4           | 15.9           | 65.1           |
| 68   | 68             | 131.3          | 171.5          | 92.1                   | 103.2                  | 90.2           | 41.3           | 14.9           | 17.4           | 15.9           | 63.5           |
| 70   | 70             | 131.3          | 171.5          | 92.1                   | 103.2                  | 90.2           | 41.3           | 14.9           | 17.4           | 15.9           | 63.5           |
| 75   | 75             | 145.3          | 196.9          | 99.9                   | 113.5                  | 98.1           | 45.4           | 13.4           | 20.6           | 17.4           | 65.1           |
| 80   | 80             | 148.5          | 188.9          | 104.8                  | 116.8                  | 102.2          | 40.5           | 14.8           | 20.6           | 40.5           | 63.8           |
| 85   | 85             | 154.8          | 206.4          | 111.1                  | 123.2                  | 107.9          | 40.5           | 15.1           | 20.6           | 40.5           | 65.1           |
| 90   | 90             | 158.8          | 212.7          | 117.5                  | 129.5                  | 114.3          | 40.5           | 15.1           | 17.4           | 40.5           | 65.1           |
| 95   | 95             | 172.0          | 222.3          | 120.0                  | 132.1                  | 117.5          | 40.5           | 15.1           | 17.4           | 40.5           | 65.1           |
| 100  | 100            | 171.7          | 228.6          | 127.0                  | 139.7                  | 123.8          | 40.5           | 15.1           | 20.6           | 40.5           | 65.1           |
| 105  | 105            | 174.9          | 228.6          | 130.2                  | 142.9                  | 127.0          | 40.5           | 15.1           | 20.6           | 40.5           | 65.1           |
| 110  | 110            | 184.4          | 241.3          | 139.7                  | 152.4                  | 136.5          | 40.5           | 15.1           | 20.6           | 40.5           | 65.1           |
| 115  | 115            | 184.4          | 241.3          | 139.7                  | 152.4                  | 136.5          | 40.5           | 15.1           | 20.6           | 40.5           | 65.1           |
| 120  | 120            | 192.4          | 263.5          | 146.1                  | 160.4                  | 142.9          | 40.5           | 15.1           | 20.6           | 91.4           | 65.1           |
| 125  | 125            | 254.0          | 304.8          | 158.8                  | 184.4                  | 155.6          | 91.4           | 14.4           | 20.6           | 91.4           | 77.3           |
| 130  | 130            | 260.4          | 311.2          | 165.1                  | 190.8                  | 161.9          | 91.4           | 14.4           | 20.6           | 91.4           | 77.3           |
| 135  | 135            | 266.7          | 322.3          | 171.5                  | 203.2                  | 168.3          | 91.4           | 14.4           | 23.8           | 91.4           | 77.3           |
| 140  | 140            | 266.7          | 322.3          | 171.5                  | 203.2                  | 168.3          | 91.4           | 14.4           | 23.8           | 91.4           | 77.3           |

DIMENSIONS TABLE (Measures in mm. subject to change)

TABELLE DER ABMESSUNGEN (In mm. Abweichungen oder Änderungen vorbehalten)



### LÍMITES OPERATIVOS / LIMITES D'UTILISATION / OPERATING LIMITS / EINSATZGRENZEN

$d_1 = 25 \div 140 \text{ mm}$

$p/d = 20 \text{ Kg/cm}^2$

$v/g = 25 \text{ m/s}$

$t = -20 \div +200^\circ\text{C}$

Los límites operativos vienen condicionados por el factor PV

Les limites d'utilisation ci-dessus peuvent varier en fonction du facteur PV

The operating limits depend on the PV factor

Die Einsatzgrenzen werden durch den DG-Faktor festgelegt

### MATERIALES / MATÉRIAUX / MATERIALS / MATERIALIEN

|       |       |
|-------|-------|
| BOEGG | QOEGG |
| BOPGG | QOPGG |
| BQVGG | QQVGG |

Existen otras combinaciones de materiales

Il existe d'autres combinaisons de matériaux

Available in other materials

Es gibt andere Materialkombinationen

### COMPONENTES / CONSTRUCTION / COMPONENTS / KOMPONENTEN

1 Cara de roce fija / Grain stationnaire /  
Stationary face / Stationäre Gleitfläche

2 Cara de roce rotante / Grain mobile /  
Rotative face / Rotierende Gleitfläche

3 Junta tórica / Joint torique /  
O-ring

4 Muelle / Ressort /  
Spring / Feder

5 Armadura metálica / Corps /  
Metal frame / Metallgestell

5a Brida / Bride /  
Flange / Flansch

6 Tornillo de fijación / Vis d'attache /  
Set screw / Befestigungsschraube